



shtorm

GROUP

HOTEL FURNITURE

Established in 2011, Shtorm Group stands at the forefront to connect quality workmanship, suppliers and retailers worldwide to make sure that our customers achieve the high standards they aspire for.

By utilizing our exclusive manufacturing units and working with the best quality materials, we aim to create a brand that is synonymous with high quality products, value and service. On a global base, we have supply partners which allow us to provide high quality products using a quick and efficient sourcing system which can fulfill any order within your deadlines, no matter how large or complicated the order may be.





# Vision

To be providers of world class products with exceptional customer service and strive to be market leaders.

# Mission

To create worth for our clientele through functionality, dependability and excellence.

# Why Us?

Shtorm Group gathered the finest vendors worldwide to provide its client wide range of items with cutting edge design, high performance and complete range for all your requirements.

We provide hassle free transport and guaranteed peace of mind with the help of our dedicated support team to assure successful implementation.

# Our Factories

ITALY

TURKEY

SPAIN

INDIA

VIETNAM

CHINA







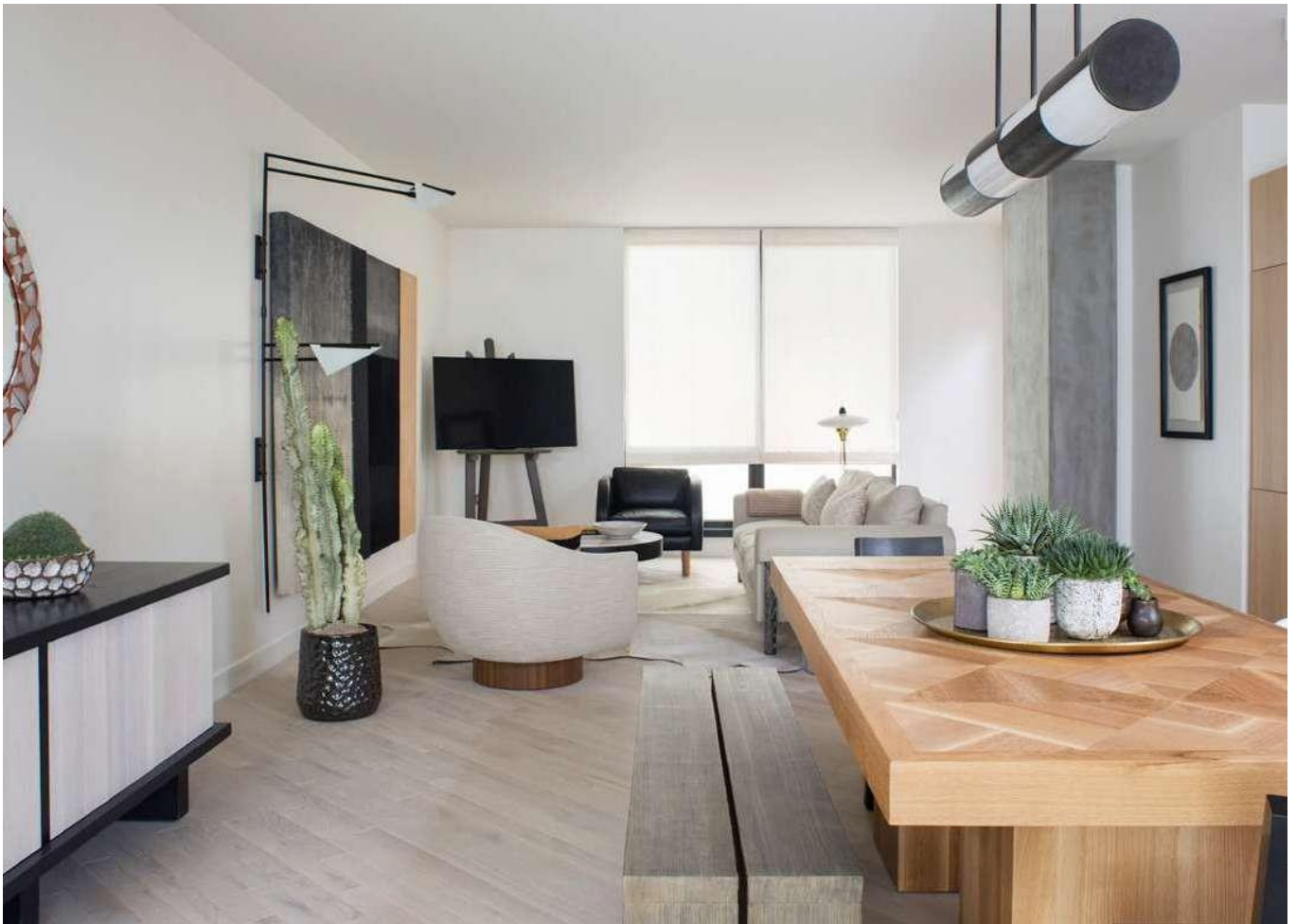










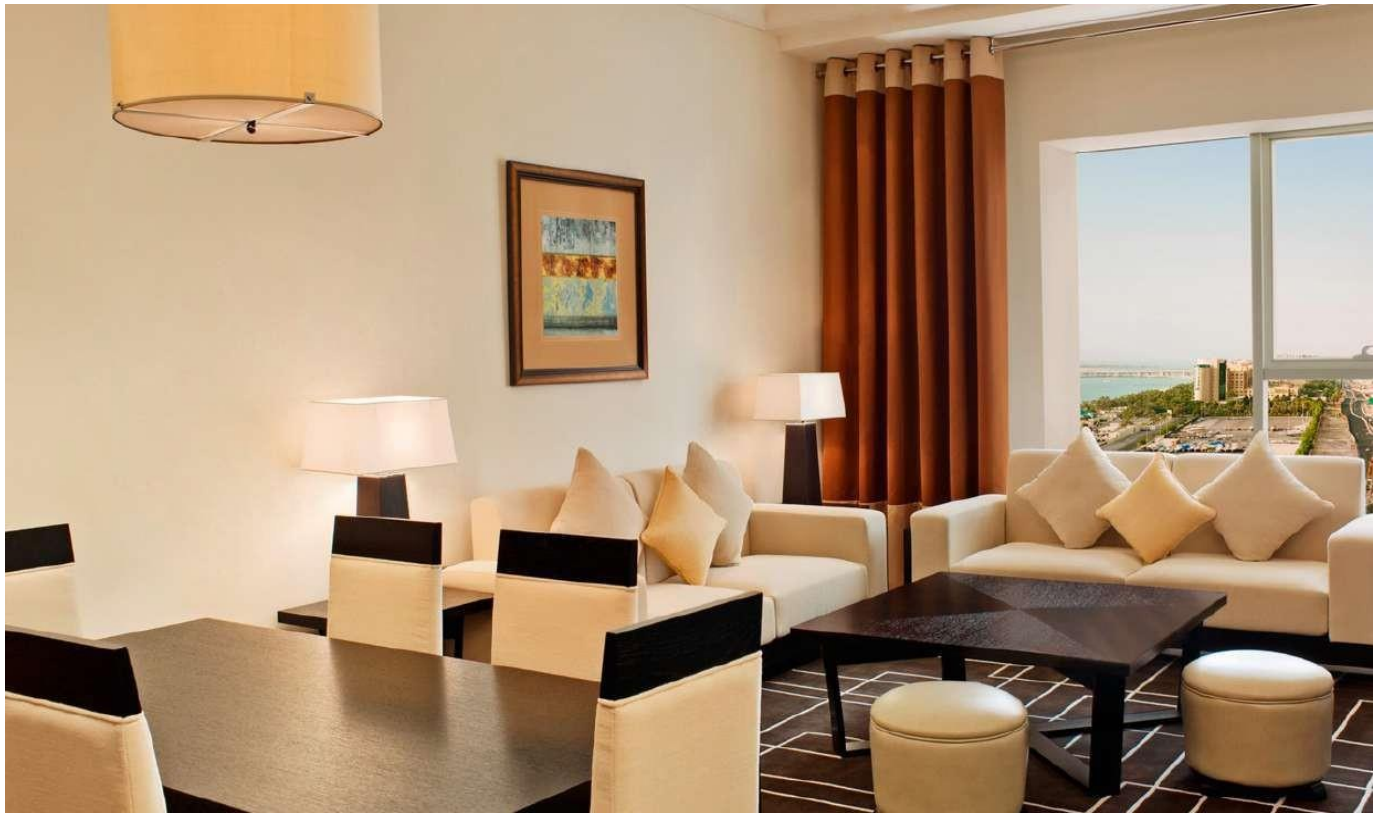




RE  
SORT  
ST  
YLE







# GROSVENOR HOUSE SUITES

PRODUCT DESIGN





# GROSVENOR HOUSE DUBAI

PRODUCT DESIGN



# EMBASSY BAR

PRODUCT DESIGN

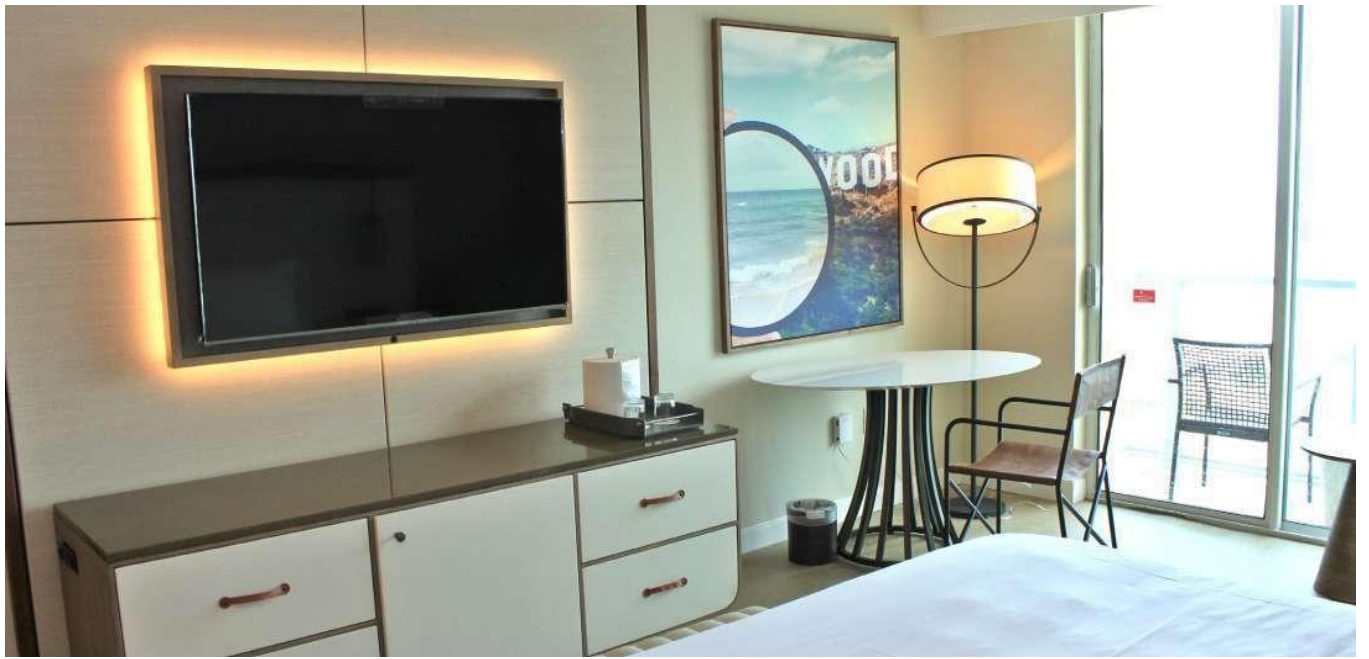




# JW MARRIOTT MARQUIS DUBAI

LOBBY, DINNING & ROOM DESIGN





MARRIOTT  
**HOLLYWOOD BEACH**





# SHANGRI-LA HOTEL ABU DHABI

PRODUCT DESIGN







LA  
VIE







# CROWN METROPOL - LA VIE CHAMPAGNE BAR PERTH

BAR DESIGN









# INTERIOR PRODUCTS SEATING



**ITEM#JE-CH1010A**  
Bar stool, hardwood frame, leather upholstery, stainless steel foot rest, stainless sabots.



**ITEM#JE-CH1010B**  
Bar stool, open back, hardwood frame, leather upholstery, stainless steel foot rest, stainless sabots.



**ITEM#JE-CH1011**  
Bar stool, blackened steel frame, contoured hardwood seat and backrest.



**ITEM#JE-CH1012**  
Jay Edward design original bar stool, ebony finish, ash wood frame. Available in any fabric or leather seat, shown in pearl snake skin.



**ITEM#JE-CH10114**  
Jay Edward design original bar stool, ebony finish, ash wood frame. Available in any fabric or leather seat, shown in white leather.



# INTERIOR PRODUCTS SEATING



**ITEM#JE-CH1015**  
Solid hardwood side chair  
for dining dark espresso finish,  
carved contour seat.



**ITEM#JE-ST2020**  
Side table, solid hardwood,  
dark espresso finish.



**ITEM#JE-CH1016**  
Lounge chair, hardwood frame,  
upholstered seat and back rest.



**ITEM#JE-UPS34001**  
Leather sofa and matching pillows,  
solid hardwood frame and legs,  
button detailed for a classic, sophis-  
ticated look.

# INTERIOR PRODUCTS SEATING



ITEM#JE-CH1017  
Arm chair, painted faux metal  
finish on hardwood frame. Leather  
upholstered seat and back.



ITEM#JE-CH1019  
Occasional chair,  
ash wood legs, solid construction,  
brass nailhead details.



ITEM#JE-CH1018  
Antique style armchair,  
brass nailheads, hand carved  
hardwood details on back,  
arm rests and legs, gold accents,  
antique style leather upholstery.



# INTERIOR PRODUCTS



# INTERIOR PRODUCTS



## ITEM#JE-ST2020

Side table, faux shagreen finish with satin nickel accents. This item was manufactured for one of our clients and may be an exclusive design.



## ITEM#JE-ST2022

Round side table, faux, gloss metallic finish on wood with one drawer. Blackened steel legs. This item was manufactured for one of our clients and may be an exclusive design.



## ITEM#JE-ST2023

Round side table, tempered glass top. Blackened steel legs with chrome ring accents. This item was manufactured for one of our clients and may be an exclusive design.



## ITEM#JE-DT5010

Dining table, white quartz with steel base. This item was manufactured for one of our clients and may be an exclusive design.



# INTERIOR PRODUCTS



ITEM#JE-D6010  
Jay Edward design two drawer desk, walnut veneer finish. Part of case-goods line, available in a variety of veneers and laminates.



ITEM#JE-D6011  
Natural finish, white oak veneer desk with contrast stainless steel drawer front. This item was manufactured for one of our clients and may be an exclusive design.



ITEM#JE-D6014  
7 drawer desk, contrast veneer drawer fronts with white painted frame. Inset laminate top matching veneer drawers. This item was manufactured for one of our clients and may be an exclusive design.

# INTERIOR PRODUCTS



## ITEM#JE-C003

Minibar desk / desk combo unit. Contrast front panel in wood veneer, tempered glass tops for added protection, built in power ports and minibar ventilation.



## ITEM#JE-C004

Combo wall unit. Flip top desk with vanity mirror / minibar / dresser. Finished in gloss walnut veneer and white anigre wood with champaign glass top. This item was manufactured for one of our clients and may be an exclusive design.



# INTERIOR PRODUCTS



ITEM#JE-CT071

Coffee table, part of set of 3 tier tables. Walnut veneer with solid walnut legs. This item was manufactured for one of our clients and may be an exclusive design.



ITEM#JE-DT5011

Solid walnut, high gloss finish, inlaid brass metal details, champagne color glass top with brushed nickel edge band. This item was manufactured for one of our clients and may be an exclusive design.

# INTERIOR PRODUCTS



ITEM#JE-ST2024  
Side table, walnut laminate top,  
solid wood edge band, satin nickel  
finish steel legs.



ITEM#JE-ST2024  
Tier side tables, walnut laminate  
tops, veneer wood edge band,  
brushed stainless steel legs.



ITEM#JE-DT5014  
Dining tables, varying sizes.  
Natural finish, triangle pattern cut,  
white oak veneer. This item was  
manufactured for one of our clients  
and may be an exclusive design.



ITEM#JE-DT5015  
Dining table - 6ft version, varying sizes.  
Natural finish, triangle pattern cut, white  
oak veneer. This item was manufactured  
for one of our clients and may be an  
exclusive design.



# INTERIOR PRODUCTS



## ITEM#JE-DR14

Dresser unit, textured leather drawer fronts with contrasting leather pulls, wood veneer sides and hardwood base, quartz top. This item was manufactured for one of our clients and may be an exclusive design.



## ITEM#JE-SB028

Dining sideboard, black finish on hardwood panels, contrasting stainless steel drawer pulls and legs. Varying sizes. This item was manufactured for one of our clients and may be an exclusive design.

# INTERIOR PRODUCTS



**ITEM#JE-D609**

Work table / desk with center wire management. Oak veneer top with powder-coated blue steel legs, stackable. This item was manufactured for one of our clients and may be an exclusive design.



**ITEM#JE-DB5015**

Dining bench, varying sizes. Natural finish, natural oak veneer with grey wash. This item was manufactured for one of our clients and may be an exclusive design.



# INTERIOR PRODUCTS



## ITEM#JE-D6015

One drawer desk. Finished in gloss walnut veneer and white anigre wood, satin nickel accents. This item was manufactured for one of our clients and may be an exclusive design.



## ITEM#JE-MB015

Minibar unit, finished in gloss walnut veneer and white anigre wood, satin nickel accents. This item was manufactured for one of our clients and may be an exclusive design.



## ITEM#JE-SB028

Dining sideboard, natural finish in contrasting ebony oak with textured blond finish, solid wood drawer fronts. Varying sizes. This item was manufactured for one of our clients and may be an exclusive design.



# INTERIOR PRODUCTS



## ITEM#JE-C005

Combo wall unit, minibar / dresser. Finished in gloss walnut veneer and white anigre wood with champaign glass top. This item was manufactured for one of our clients and may be an exclusive design.



## ITEM#JE-SB029

Dining sideboard, varying sizes, matching veneer panels forming diamond shape on drawer fronts. This item was manufactured for one of our clients and may be an exclusive design.





# INTERIOR PRODUCTS



## ITEM#JE-DR15

Dresser unit, white finish drawer fronts with nickel pulls. Wood veneer sides and interior finish, tempered glass top. This item was manufactured for one of our clients and may be an exclusive design.



## ITEM#JE-DR16

Dresser unit, white painted finish, tempered glass top, CNC wood cut pattern on side panels. This item was manufactured for one of our clients and may be an exclusive design.



## ITEM#JE-NS15

Night stand, white painted finish, tempered glass top, CNC wood cut pattern on side panels. This item was manufactured for one of our clients and may be an exclusive design.



# INTERIOR PRODUCTS

ITEM#JE-S12  
Custom size bathroom shelf.  
Solid wood in natural finish with  
blackened steel frame.



ITEM#JE - CASE - COMBO  
Part of JE casegood line. Combo dresser  
unit with minibar and TV mounting back  
panel. Available in a wide variety of veneer  
and laminate finishes.



ITEM#JE - CASE - HEADBOARD  
Part of JE casegood line. Wall mounted  
headboard panels that perfectly match the  
details found throughout the JE casegood lines.  
Available in a wide variety of veneer and  
laminate finishes.

ITEM#JE - CASE - NIGHT STAND  
Part of JE casegood line. One drawer night stands in varying sizes  
to accommodate queen or king beds. Built in power and USB ports.  
Available in a wide variety of veneer and laminate finishes with or  
without tempered glass tops.



# INTERIOR PRODUCTS

## ITEM#JE - CASE - WARDROBE

Part of JE casegood line. Wardrobe unit with drawer for safe and open space for in room amenities. Available in a wide variety of veneer and laminate finishes.



## ITEM#JE - CASE - LUGGAGE BENCH

Part of JE casegood line. Luggage bench with upholstered, firm padded seat and under storage space. Available in a wide variety of veneer and laminate finishes.



## ITEM#TOUCH UP KIT

Tool Furniture touch up kit provided to our clients. Kit includes matching touch up stain, wood markers, wood filler, gloves, paint brushes and everything required to repair a small scratch or mark on furniture that may occur during use.



# INTERIOR PRODUCTS



## ITEM#JE-BED05

Queen and king beds with upholstered headboards and bed base. Steel hairpin legs and ventilated plywood panel mattress base. This item was manufactured for one of our clients and may be an exclusive design.



## ITEM#JE-NS16

One drawer night stand, built in power port, natural finish oak veneer with blackened steel base. This item was manufactured for one of our clients and may be an exclusive design.

# INTERIOR PRODUCTS



## ITEM#JE-BED06

Queen and king beds with upholstered headboards and bed base. Hardwood legs and ventilated plywood panel mattress base. This item was manufactured for one of our clients and may be an exclusive design.



## ITEM#JE-NS17

Two drawer night stand, built in power port, alternating direction of veneer grain drawer fronts, push button drawer opening. This item was manufactured for one of our clients and may be an exclusive design.



## SEATING

# CUSTOM UPHOLSTERED



### ITEM#JE-UPC3014

Upholstered lounge chair with hardwood base. Available in custom upholstery, leather, and wood finish.



### ITEM#JE-UPC3015

Lounge chair with hardwood legs. Shown in deep red, contract grade fabric. Upholstered pieces available in stock fabric, leather or COM.

### ITEM#JE-UP3016

Womb style, retro lounge chair with matching ottoman. Shown in bright yellow contract grade fabric and chrome legs. Upholstered pieces available in stock fabric, leather or COM. Steel rod with polished chrome finish; foam; reinforced fiberglass shell; plywood platform; polyester fiber with foam core; stainless steel and nylon glides. Spinneybeck Riva water resistant leather; or boucle upholstery of 52% wool, 48% nylon.



SEATING

CUSTOM **UPHOLSTERED**



ITEM#JE-UPS4003  
Chaise lounge / day bed with  
matching pillows. Contract grade  
slate grey fabric.



ITEM#JE-UPS4002  
Double sided public space sofa  
with accent pillows.

SEATING

CUSTOM **UPHOLSTERED**



ITEM#JE-UPS4004

Two piece curved sofa creates a unique space for public spaces. Hardwood construction, honey stained Ash wood legs, shown in grey felt fabric.



ITEM#JE-UPS4005

Classic pull-out bed queen sleeper sofa. Solid hardwood construction. Available in varying sizes with or without bed option.



# SWING

## FURNITURE

Let your imagination  
change any room.



### ITEM#SWING

Blackened steel construction,  
belt leather webbing, bolts to ceiling  
and floor. This item was manufactured  
for one of our clients and may be an  
exclusive design.

# SWING

## FURNITURE

Let your imagination  
change any room.



### ITEM#COUPLE SWING

Outdoor woven fiber is used to create this modern hangout. Available in varying sizes and variety of resin colors. Upholstered cushions in outdoor fabric of choice or COM.

# CUSTOM COUNTER TOPS

PRODUCT DESIGN

Custom kitchen counter tops for hospitality, new construction or remodel.







STONE FOR SHOWER ENCLOSURES AND VANITY TOPS

## HOSPITALITY VANITY

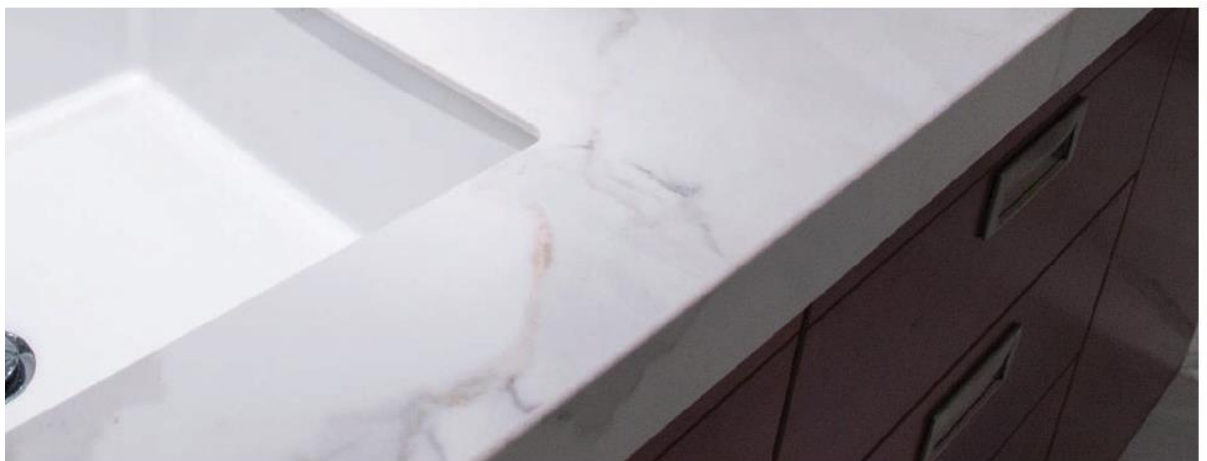


ITALIAN MARBLE VANITY





DOUBLE SINK VANITY





# Latest Project



Located in the heart of Bengaluru's premier business district, the Hilton Hilton & Hilton Garden Inn in Embassy Manyata Business Park, India. Walk into the spacious luxury of seamless events. With 619 rooms, close to 60,000 sq. ft. of convention space, and a retail zone within the premises.



# Latest Project



**Hilton**

BENGALURU EMBASSY MANYATA  
BUSINESS PARK













Double Up





































Double Up

































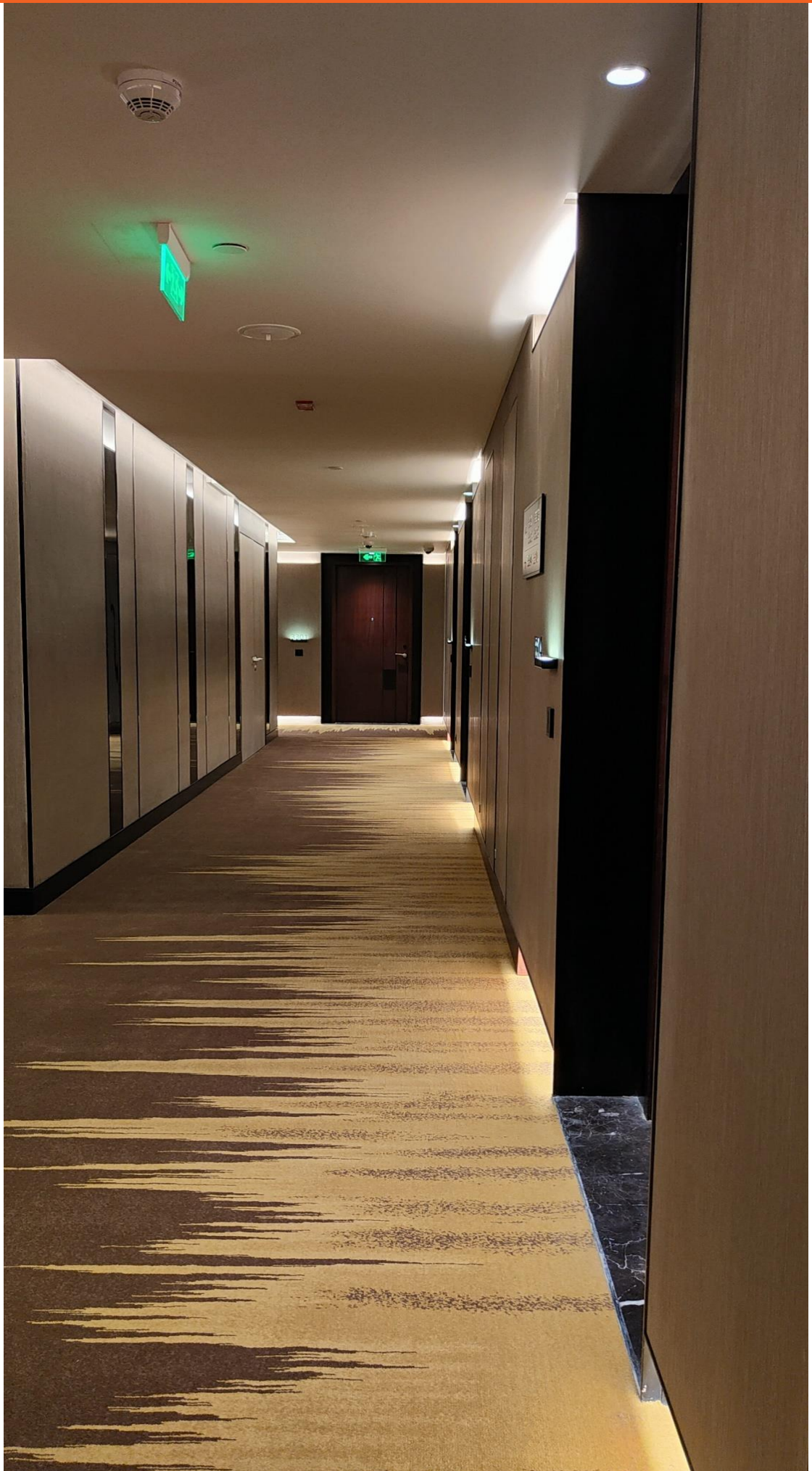


















# Latest Project



















































Hilton Garden Inn  
Scan the QR code to view the product details.  
Hilton Garden Inn  
Hilton Garden Inn





TEA  
TONIC  
THE LUXURY

Celebrate your time of the city  
with our handcrafted  
A uniquely crafted blend of  
2500 herbs, spices & oils.  
Carefully crafted to combine  
ancient herbs, honey & Maltolins  
& Make it an antioxidant  
from a modern botanical  
by using the most  
Sensory Experience.

TEA  
TONIC  
THE LUXURY





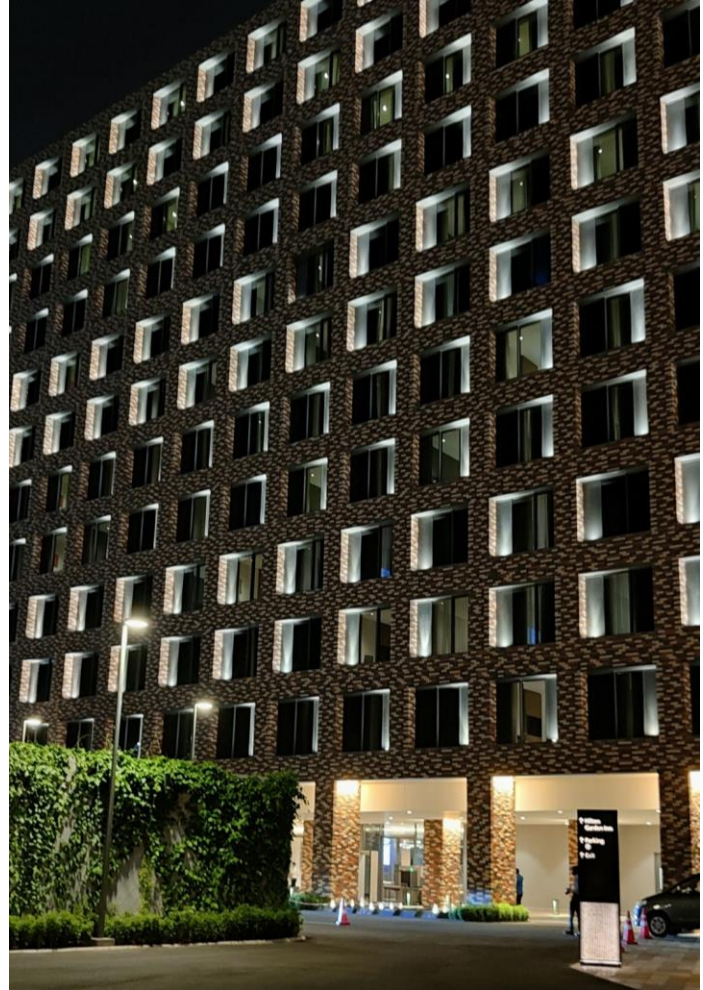














# Latest Project



**FOUR SEASONS**  
Bengaluru at Embassy One





















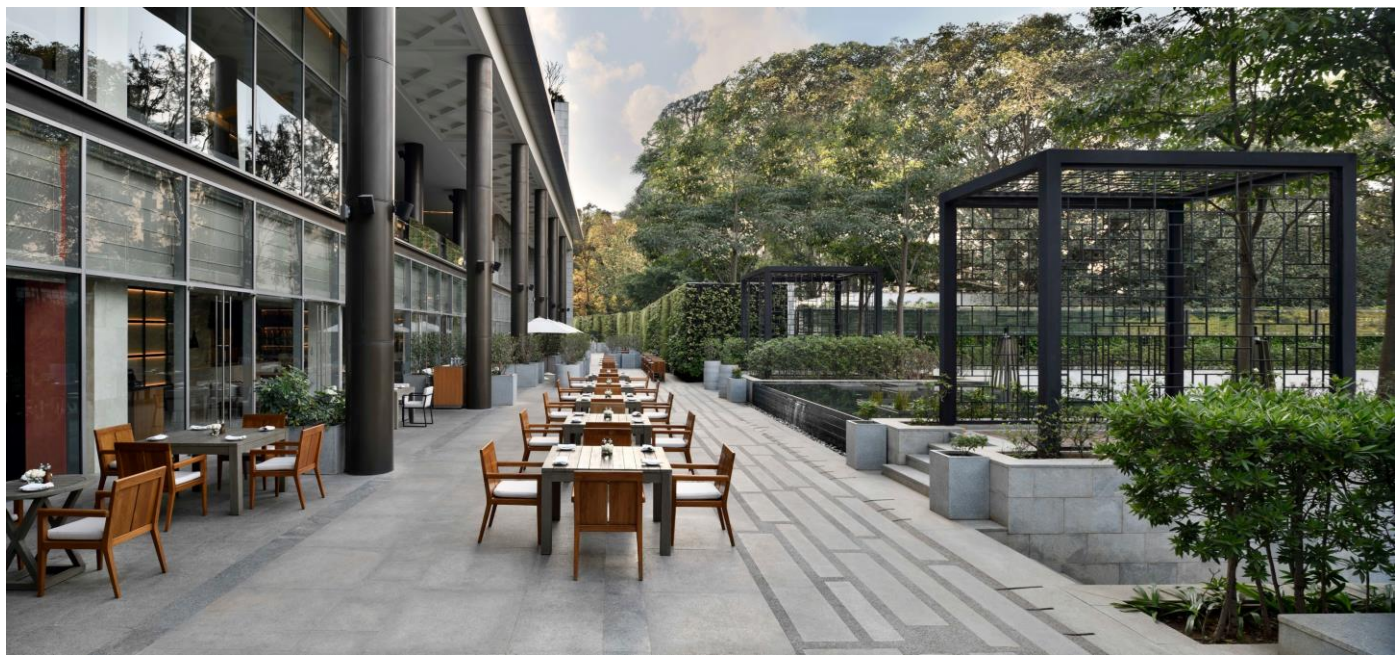








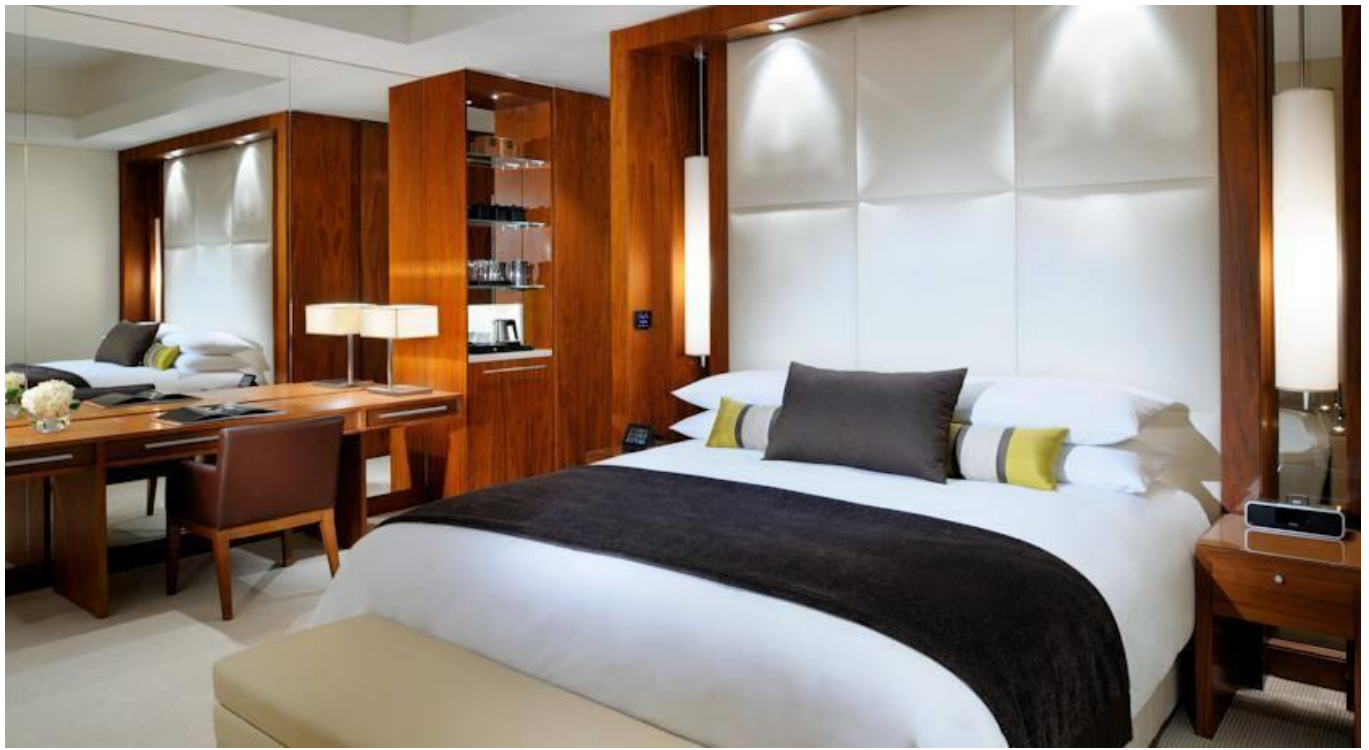








**JW MARRIOTT.**  
**MARQUIS**  
**DUBAI**























# Projects completed by our factory

(1 of 4)

## GCC






- JW Marriot Marquis - Dubai, UAE
- Four Seasons - Dubai
- Shangri-La – Abu Dhabi
- Emirates Airport Lounge - Dubai
- Grosvenor House Hotel - Dubai, UAE
- Yas-Staybridge Suite – Abu Dhabi
- Capital Club – Dubai, UAE
- W-Hotel – Doha, Qatar
- Jumeirah Beach Refurbishment - Dubai, UAE
- Movenpick - Saudi Arab
- KEMPINSKI RAFAL –Dubai, UAE
- Gary Rhodes Restaurant - Dubai, UAE
- Crown Plaza - Yas Island-Abu Dhabi
- Le Méridien Dubai Airport-Dubai, UAE
- Capital Club – Bahrain



# Projects completed by our factory

(2 of 4)

## Rest of the world

-  Hilton Hotel Embassy Manyata Business Park - Bangalore
-  Hilton Garden Inn Embassy Manyata Business Park - Bangalore
-  Four Seasons – Bangalore
- St. Regis Lasa – China
- The New Hilton - Trinidad
- Sheraton Luxor – Egypt
- The Langham London
- Hyatt Regency Club – Guam
- Emirates Airport Lounge – Beijing, Colombo, Manchester, Malaysia, Birmingham, New Delhi, Istanbul, San Francisco, JFK, Milan, Paris
- MMT, Turkmenistan
- Bayview Gardens - Australia
- Kahler Grand Hotel
- Emaar-The Golf clubhouse at UTC - Egypt
- Galkynysh - Ashgabat, Turkmenistan
- Sheraton-Perth - Australia
- Parklake Hotel - Australia
- Novotel Darling Harbor - Australia
- Mecure Perth - Australia

# Projects completed by our factory

(3 of 4)

- RNA Joinery - Australia
- Ovolo Blue - Australia
- Crown Perth - Australia
- Astral L12 Suits - Australia
- Star Gaming Lounge – Australia
- Peninsula Beijing
- Leopalace Resort – Guam
- Lough Eske Castle – Ireland



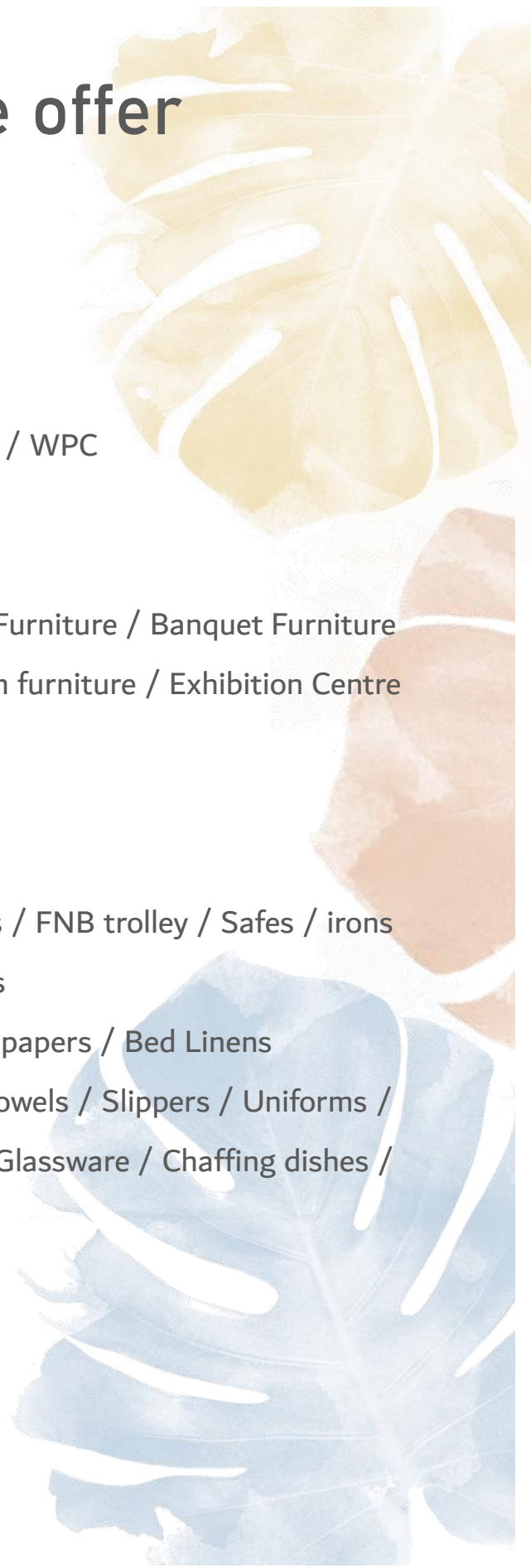
# Projects completed by our factory

(4 of 4)

- MINAGRI - TURKMENISTAN
- Boracay Casino - Australia
- Xia Lv Di – Taiwan
- Cape Weligama Resorts - India
- Sofitel - Sydney, Australia
- Novotel sipcot - India
- Astal Hotel and Residences - Australia
- Element Suzhou Science & Technology Tow - China
- Novotel Gourmet Bar – Australia
- Moiwa Village – Japan
- Fairmont Hotel – Jordan
- Hydro Majestic - Australia
- Jupiter Hotel - Australia
- Sheraton on the park hotel - Sydney
- Fairway Drive, Kellyville - Australia
- Novotel Gourmet Bar – Australia
- Crown Plaza, Coogee Beach Sydney - Australia
- Pullman Albert Park – Australia
- Marriotto Associa - Nagoya, Japan
- Shangri-La - Tokyo, Japan
- Sage Perth - Australia

# Hotel products we offer

- Engineering lights (indoor / outdoor)
- Decorative lights and chandeliers
- Sanitaryware / Bathroom
- Carpets / Wooden Floor / Tiles / IPE / WPC
- Complete Room Furniture package
- Commercial kitchen equipment
- Common areas & Restaurants Loose Furniture / Banquet Furniture / Aluminum chairs / Conference room furniture / Exhibition Centre furniture
- CCTV / Doors, window & locks
- Gym & staff lockers / Weighing scale
- Housekeeping & room service trolleys / FNB trolley / Safes / irons / iron board / Luggage rack & trolleys
- Drapery / Curtains / Decorative Wall papers / Bed Linens
- Hangers / Dustbins / Hair dryers / Towels / Slippers / Uniforms /
- Stainless steel cutlery / Tableware & Glassware / Chaffing dishes / Crockery & Bone China
- Sign board
- Vertical artificial gardens





# Thank You!

2007, Saba Tower 1, Cluster E, JLT, Dubai, UAE | PO Box 213951  
Ph: + 971 4 4531864 / +971 555914258

---

[info@shtormgroup.com](mailto:info@shtormgroup.com)  
[www.shtormgroup.com](http://www.shtormgroup.com)



Follow us on:



**shtorm**  
GROUP